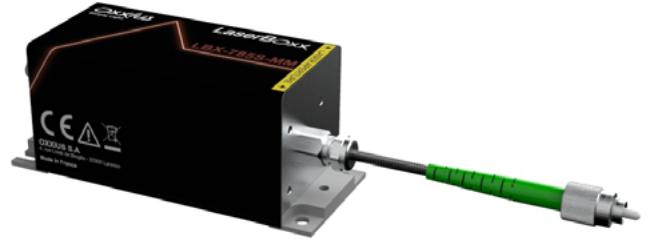


LBX-785S-MM Diode based laser source

Optical characteristics *

Emission wavelength	785 nm (± 0.5 nm tolerance)
Spectral linewidth, FWHM	0.07 nm MHz
Wavelength stability over 8 hours, temperature within $\pm 3^{\circ}\text{C}$	≤ 10 pm
Coherence length	$\geq A$ m
Side mode suppression ratio	≥ 30 dB



— Optical power

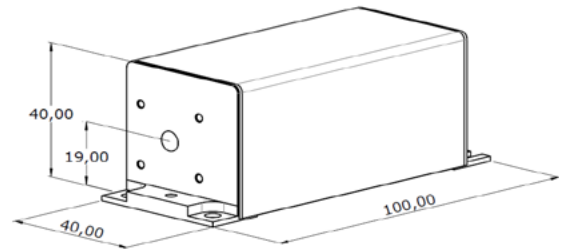
Part number	Free space output	Fiber-coupled output	
		Single mode	Multi mode fiber
LBX-785S-40-CIR-(OE/PPF)	500 mW	n/a	400 mW

Power stability $\pm 1\%$
over 8 hour, temperature within $\pm 3^{\circ}\text{C}$

Control modes Automatic Current Control (ACC)

Optical noise NA rms
10 Hz-20 MHz bandwidth

Mechanical drawings



Plug and Play version provide with:

- RemoteBoxx controller
- Manual shutter
- DC power supply

General specifications

	Plug and Play version	OEM version
Compliance	CE FDA 21 CFR 1040.10/1040.11	FDA 21 CFR 1040.10 / 1040.11
Operating temperature	10 to 38°C ambient air with optional heat sink	20 to 35°C baseplate
Power consumption	4 W typ. / 10 W max.	
Storage temperature	0 to 60°C	
Humidity	Up to 90%RH, non-condensing	
Supply voltage	100 to 240 VAC external power supply	5 to 12 VDC
Warm-up time	≤ 2 minutes	
Interfaces	USB ControlBoxx controller	USB, RS-232, electronic interface

Available options

- ACX-HTSK-1 Heat sink for operation in ambient air up to 38°C
- OPT-SHTE-LCX Electro-mechanical shutter

Fiber coupling options **

	ACX-FCSMUV or ACX-FCPM	ACX-FCMM-R50
Power stability over 8 hours and within $\pm 3\text{k}$	$\pm 2.0\%$	$\pm 2.0\%$
Fiber optical characteristics	3.5 μm core diameter 0.11 N.A	50 μm core diameter 0.22 N.A
Polarization extinction ratio (ACX-FCPM only)	random	n/a
Fiber output connector	FC/APC	FC/APC
Fiber length	2 m	2 m

Warranty : 18 months from shipment date

*Specifications at nominal power

** Variant are available on demand



CONTACT US

Oxxius S.A
4 rue Louis de Broglie
F-22300 Lannion, France

Phone : +33 296 48 70 28
sales@oxxius.com
www.oxxius.com