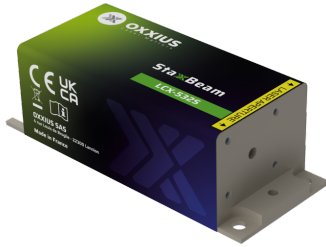


StaxxBeam

By Oxxius

Product range	Single Frequency Lasers
Product name	StaxxBeam 532 nm (fixed power)
Reference	LCX-532S (fixed power)
Description	<p>The StaxxBeam 532 is a compact and powerful 532 nm laser source that delivers a narrow linewidth emission and a spectrum of outstanding purity. Its robust design, complete with readily available safety features makes it well-suited for both laboratory and industrial use.</p> <p>Its proven performance, stability, and versatility make it a trusted solution for laser Doppler anemometry, Raman and Brillouin spectroscopy, interferometry, zeta-potential measurements, and other applications. Key features:</p> <ul style="list-style-type: none"> • Single frequency emission, ≤ 1 MHz linewidth • ≤ 1 pm wavelength stability • TEM₀₀ spatial mode • ± 1.0 % long-term power stability; low optical noise • Integrated control electronics Fully compatible with Oxxius' AOM option, or with MixxWave combiners, in combination with other laser lines.



Caption: LCX-532S

Product Variations

Part Number	Power
LCX-532S-50-CSB-PPF	50 mW
LCX-532S-100-CSB-PPF	100 mW
LCX-532S-150-CSB-PPF	150 mW
LCX-532S-200-CSB-PPF	200 mW
LCX-532S-300-CSB-PPF	300 mW
LPX-532S-500-CSB-PPF	500 mW
LPX-532S-800-CSB-PPF	800 mW

Optical Characteristics

Emission wavelength	532 nm
Tolerance	±0.3 nm
Control modes	Automated power control, fixed or adjustable power level
Optical noise	≤ 0.2% rms, 10 Hz-20 MHz bandwidth
Spectral linewidth	≤ 1 MHz
Wavelength stability over 8 hours, temperature within ±3°C	≤ 1 pm
Wavelength drift over consecutive on/off cycles, temperature within ±3°C	≤ 1 pm
Coherence length	≥ 100 m
Side mode suppression ratio, +/- 0.5nm from the main peak	≥ 30 dB
Side mode suppression ratio, +/- 5nm from the main peak	≥ 60 dB typ.
Beam diameter, 1/e² level, 50mm from the beam aperture	0.7 ±0.1 mm (±0.15 mm for 500 mW and above)
Beam divergence, 1/e² level full beam, far field	≤ 1.4 mrad
Beam quality factor M²	1.1
Beam circularity, far field	≥ 90 %
Polarization state	Linear, vertical, extinction ratio ≥ 20 dB

General Specifications

Power consumption	20 W max.
Supply voltage	5 V to 12 V
Operating temperature	10 °C to 50 °C
Storage temperature and humidity	0 °C to 60 °C
Warm up time	≤ 10 minutes
Interfaces	USB, RS-232, direct modulation inputs
Dimensions (laser head)	100x40x32 mm
Weight (laser head)	≤ 300 g
Controler dimensions	109x84x30 mm
Compliance	CE (incl. IEC 60825-1) and FDA 21 CFR 1040.10 / 1040.11
Laser class	3B
Warranty	24 months or 10000 hours, whichever occurs first

Options

Single-mode fiber coupling
Multimode fiber coupling
Heat management
High rate modulation
Optical Isolator
OEM version

Oxxius has a policy of continuous product improvement. Specifications may change without notice.