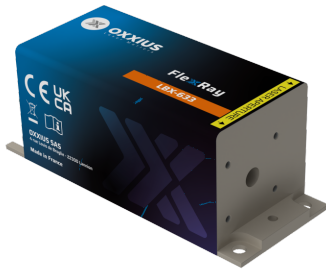


FlexxRay

By Oxxius

Product range	CW & Modulated Lasers
Product name	FlexxRay 633 nm
Reference	LBX-633
Description	<p>The FlexxRay LBX-633 is a compact 633nm laser source delivering one of the highest power available on the market over a beam of superior quality, and featuring a high-speed modulation. Its integrated control electronics and robust design suit both laboratory and industrial use.</p> <p>Performance, stability, and versatility make it a trusted solution for fluorescence-based microscopy, flow cytometry and illumination. Key features</p> <ul style="list-style-type: none"> • TEM₀₀ spatial mode • ±0.5% long-term power stability; low optical noise • Modulation up to 150 MHz • Integrated control electronics • 100×40 mm industry-standard footprint Fully compatible with Oxxius MixxWave combiners for single-mode fiber delivery alongside other laser lines.



Product Variations

Part Number	Power
LBX-633-100-CSB-PPA	100mW

Optical Characteristics

Emission wavelength	633 nm
Tolerance	(±3nm tolerance)
Control modes	Automated power control, Automated current control
Optical noise	≤ 0.2% rms, 10Hz-20MHz bandwidth
Spectral linewidth	≤ 1.2nm
Digital modulation function - Rise / fall time	≤ 15ns
Digital modulation function - Bandwidth	≥ 20MHz
Analog modulation function - Rise / fall time	≤ 150ns
Analog modulation function - Bandwidth	≥ 3MHz
Beam diameter, 1/e² level, 50mm from the beam aperture	0.8 ±0.2mm
Beam divergence, 1/e² level full beam, far field	≤ 1.7mrad
Beam quality factor M²	≤ 1.25
Beam circularity, far field	≥ 90%
Polarization state	Linear, vertical,extinction ratio ≥ 20dB

General Specifications

Power consumption	2 W typ. / 10 W max.
Supply voltage	5V to 12V
Operating temperature	10°C to 50°C
Storage temperature and humidity	0°C to 60°C
Warm up time	≤2 minutes
Interfaces	USB, RS-232, direct modulation inputs
Dimensions (laser head)	100x40x40 mm
Weight (laser head)	≤330 g
Controler dimensions	106x126x56 mm
Compliance	CE (incl. IEC 60825-1) and FDA 21 CFR 1040.10 / 1040.11
Laser class	3B
Warranty	24 months or 5000 hours, whichever occurs first

Options

Single-mode fiber coupling
Multimode fiber coupling
Heat management
Electromechanical shutter
Band-pass filter
OEM version

Oxxius has a policy of continuous product improvement. Specifications may change without notice.