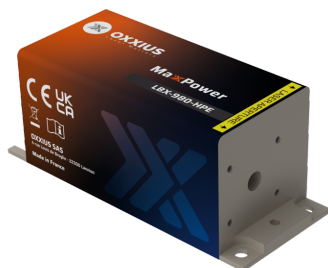


| | |
|--------------------|--|
| Gamme | High-Power Diode Modules |
| Title | MaxxPower 980 nm |
| Reference | LBX-980 |
| Description | <p>The MaxxPower LBX-980 is a compact 980 nm laser source that exhibits the highest optical power over an industry-standard 100×40 mm footprint. Its robust design, complete with readily available safety features makes it well-suited for both laboratory and industrial use. This model is a trusted solution for illumination or optical pumping.</p> <p>Key features</p> <ul style="list-style-type: none"> • $\pm 1.0\%$ long-term power stability; low optical noise • Modulation up to 1 MHz • Integrated control electronics <p>Fully compatible with Oxxius MixxWave combiners for multi-mode fiber delivery in conjunction with other laser lines.</p> |



Product Variations

| Part Number | Puissance |
|----------------------|-----------|
| LBX-980-1000-HPE-PPA | 1000mW |

Optical Characteristics

| | |
|----------------------------|--|
| Emission wavelength | 980 nm |
| Tolerance | (± 5 nm tolerance) |
| Control modes | Automated power control (APC), Automated current control (ACC) |
| Optical noise | $\leq 0.8\%$ rms, 10Hz-20MHz bandwidth |
| Spectral linewidth | ≤ 2 nm |

| | |
|--|--------------|
| Analog modulation function - Rise / fall time | ≤ 200ns |
| Analog modulation function - Bandwidth | ≥ 1MHz |
| Beam diameter, 1/e² level, 50mm from the beam aperture | 3.5 x 1.5mm |
| Beam divergence, 1/e² level full beam, far field | 0.3 x 12mrad |

General Specifications

| | |
|---|---|
| Supply voltage | 5V to 12V |
| Operating temperature | 10°C to 50°C |
| Storage temperature and humidity | 0°C to 60°C |
| Warm up time | ≤2 minutes |
| Interfaces | USB, RS-232, direct modulation inputs |
| Dimensions (laser head) | 100x40x40 mm |
| Weight (laser head) | ≤330 g |
| Controler dimensions | 106x126x56 mm |
| Compliance | CE (incl. IEC 60825-1) and FDA 21 CFR 1040.10 / 1040.11 |
| Laser class | 4 |
| Warranty | 24 months or 5000 hours, whichever occurs first |

Options

| | |
|-----------------|--------------------------|
| Option 1 | Multimode fiber coupling |
| Option 2 | Heat management |
| Option 3 | Band-pass filter |
| Option 4 | OEM version |