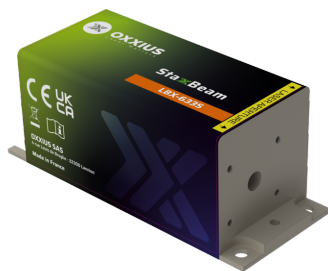


Gamme	Single Frequency Lasers
Title	StaxxBeam 633 nm
Reference	LBX-633S
Description	<p>The StaxxBeam 633 is a compact and powerful 633 nm laser source that delivers a narrow linewidth emission. Its robust design, complete with readily available safety features makes it well-suited for both laboratory and industrial use.</p> <p>Its proven performance, stability, and versatility make it a trusted solution for laser Raman spectroscopy, interferometry, and dynamic light scattering.</p> <p>Key features</p> <ul style="list-style-type: none"> • Single frequency emission, ≤ 100 MHz linewidth • ≤ 10pm wavelength stability • ≥ 1m coherence length • $\pm 1.0\%$ long-term power stability; low optical noise • Integrated control electronics <p>Fully compatible with Oxxius' AOM option, or with MixxWave combiners, in combination with other laser lines.</p>



Product Variations

Part Number	Puissance
LBX-633S-40-CIR-PPF	40mW

Optical Characteristics

Emission wavelength	633 nm
Tolerance	(0.5nm tolerance)

Control modes	Automated current control
Optical noise	$\leq 0.2\%$ rms, 10Hz-20MHz bandwidth
Spectral linewidth	$\leq 100\text{MHz}$
Wavelength stability over 8 hours, temperature within $\pm 3^\circ\text{C}$	$\leq 10\text{ pm}$
Wavelength drift over consecutive on/off cycles, temperature within $\pm 3^\circ\text{C}$	$\leq 10\text{ pm}$
Coherence length	$\geq 1\text{ m}$
Side mode suppression ratio, +/- 0.5nm from the main peak	$\geq 40\text{ dB}$
Beam diameter, $1/e^2$ level, 50mm from the beam aperture	$0.4 \pm 0.2\text{mm}$
Beam divergence, $1/e^2$ level full beam, far field	$\leq 7.7\text{mrad}$
Beam quality factor M^2	≤ 1.9
Beam circularity, far field	$\geq 65\%$
Polarization state	Linear, vertical, extinction ratio $\geq 17\text{dB}$

General Specifications

Power consumption	10W max.
Supply voltage	5V to 12V
Operating temperature	20°C to 35°C
Storage temperature and humidity	0°C to 60°C
Warm up time	≤ 2 minutes
Interfaces	USB, RS-232, direct modulation inputs
Dimensions (laser head)	100x40x40 mm
Weight (laser head)	$\leq 330\text{ g}$
Controller dimensions	109x84x30 mm
Compliance	CE (incl. IEC 60825-1) and FDA 21 CFR 1040.10 / 1040.11
Laser class	3B
Warranty	24 months or 5000 hours, whichever occurs first

Options

Option 1	Single-mode fiber coupling
Option 2	Multimode fiber coupling
Option 3	Heat management
Option 4	Electromechanical shutter
Option 5	Flange

Option 6	OEM version
-----------------	-------------