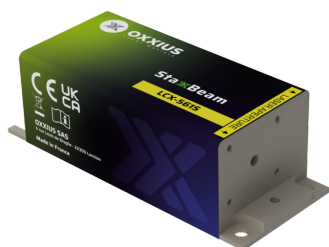


Gamme	Single Frequency Lasers
Title	StaxxBeam 561 nm (fixed power)
Reference	LCX-561S (fixed power)
Description	<p>The StaxxBeam 561 is a compact and powerful 561 nm laser source that delivers a narrow linewidth emission and a spectrum of outstanding purity. Its robust design, complete with readily available safety features makes it well-suited for both laboratory and industrial use.</p> <p>Its proven performance, stability, and versatility make it a trusted solution for laser Doppler anemometry, Brillouin spectroscopy, structured illumination microscopy and other applications.</p> <p>Key features</p> <ul style="list-style-type: none"> • Single frequency emission, ≈ 1 MHz linewidth • ≈ 1 pm wavelength stability • TEM₀₀ spatial mode • $\pm 1.0\%$ long-term power stability; low optical noise • Integrated control electronics <p>Fully compatible with Oxxius' AOM option, or with MixxWave combiners, in combination with other laser lines.</p>



Product Variations

Part Number	Puissance
LCX-561S-50-CSB-PPF	50mW
LCX-561S-100-CSB-PPF	100mW
LCX-561S-150-CSB-PPF	150mW
LCX-561S-200-CSB-PPF	200mW
LPX-561S-300-CSB-PPF	300mW
LPX-561S-500-CSB-PPF	500mW

Optical Characteristics

Emission wavelength	561 nm
Tolerance	(± 0.4 nm tolerance)
Control modes	Automated power control, fixed or adjustable power level
Optical noise	$\approx 0.2\%$ rms, 10Hz-20MHz bandwidth

Spectral linewidth	? 1nm
Wavelength stability over 8 hours, temperature within $\pm 3^{\circ}\text{C}$? 1pm
Wavelength drift over consecutive on/off cycles, temperature within $\pm 3^{\circ}\text{C}$? 1pm
Coherence length	? 100 m
Side mode suppression ratio, +/-0.5nm from the main peak	? 30 dB
Side mode suppression ratio, +/-5nm from the main peak	? 60 dB typ.
Beam diameter, 1/e² level, 50mm from the beam aperture	0.7 \pm 0.1mm (\pm 0.15mm for 300mW and above)
Beam divergence, 1/e² level full beam, far field	? 1.4mrad
Beam quality factor M²	? 1.1
Beam circularity, far field	? 90%
Polarization state	Linear, vertical,extinction ratio ? 20dB

General Specifications

Power consumption	20 W max.
Supply voltage	5V to 12V
Operating temperature	10°C to 50°C
Storage temperature and humidity	0°C to 60°C
Warm up time	?10 minutes
Interfaces	USB, RS-232, direct modulation inputs
Dimensions (laser head)	100x40x32 mm
Weight (laser head)	?300 g
Controler dimensions	109x84x30 mm
Compliance	CE (incl. IEC 60825-1) and FDA 21 CFR 1040.10 / 1040.11
Laser class	3B
Warranty	24 months or 10000 hours, whichever occurs first

Options

Option 1	Single-mode fiber coupling
Option 2	Multimode fiber coupling
Option 3	Heat management
Option 4	Electromechanical shutter
Option 5	Flange
Option 6	High rate modulation
Option 7	Optical Isolator
Option 8	OEM version