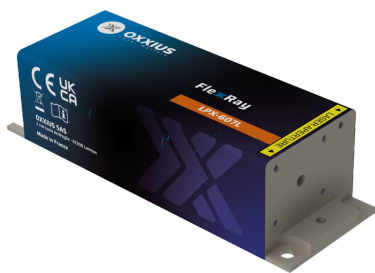


<b>Gamme</b>	CW & Modulated Lasers
<b>Title</b>	FlexxRay 607 nm
<b>Reference</b>	LPX-607L
<b>Description</b>	<p>The FlexxRay LBX-607 is a compact 607nm laser source delivering one of the highest power available on the market over a beam of superior quality, and featuring an analogue modulation function. Its integrated control electronics and robust design suit both laboratory and industrial use.</p> <p>Performance, stability, and versatility make it a trusted solution for STED microscopy, optogenetics and fluorescence imaging.</p> <p>Key features</p> <ul style="list-style-type: none"> <li>• TEM<sub>00</sub> spatial mode</li> <li>• ±1.0% long-term power stability</li> <li>• Modulation up to 1.5 kHz</li> <li>• Integrated control electronics</li> </ul> <p>Fully compatible with Oxxius MixxWave combiners for single-mode fiber delivery alongside other laser lines.</p>



## Product Variations

Part Number	Puissance
LPX-607L-100-CSB-PPA	100mW
LPX-607L-200-CSB-PPA	200mW

## Optical Characteristics

<b>Emission wavelength</b>	607 nm
<b>Tolerance</b>	(±1nm tolerance)

<b>Control modes</b>	Automated power control
<b>Optical noise</b>	$\leq 2.0\%$ rms, 10Hz-100kHz bandwidth
<b>Spectral linewidth</b>	$\leq 0.5\text{nm}$
<b>Digital modulation function - Rise / fall time</b>	$\leq 20\mu\text{s}$
<b>Digital modulation function - Bandwidth</b>	$\geq 1.5\text{kHz}$
<b>Analog modulation function - Rise / fall time</b>	$\leq 20\mu\text{s}$
<b>Analog modulation function - Bandwidth</b>	$\geq 1.5\text{kHz}$
<b>Beam diameter, 1/e<sup>2</sup> level, 50mm from the beam aperture</b>	$0.7 \pm 0.1\text{mm}$
<b>Beam divergence, 1/e<sup>2</sup> level full beam, far field</b>	$\leq 1.6\text{mrad}$
<b>Beam quality factor M<sup>2</sup></b>	$\leq 1.1$
<b>Beam circularity, far field</b>	$\geq 90\%$
<b>Polarization state</b>	Linear, vertical, extinction ratio $\geq 20\text{dB}$

## General Specifications

<b>Power consumption</b>	20 W max.
<b>Supply voltage</b>	5V to 12V
<b>Operating temperature</b>	10°C to 50°C
<b>Storage temperature and humidity</b>	0°C to 60°C
<b>Warm up time</b>	$\leq 5$ minutes
<b>Interfaces</b>	USB, RS-232, direct modulation inputs
<b>Dimensions (laser head)</b>	120x40x32 mm
<b>Weight (laser head)</b>	250 g
<b>Controller dimensions</b>	106x126x56 mm
<b>Compliance</b>	CE (incl. IEC 60825-1) and FDA 21 CFR 1040.10 / 1040.11
<b>Laser class</b>	3B
<b>Warranty</b>	24 months or 10000 hours, whichever occurs first

## Options

<b>Option 1</b>	Single-mode fiber coupling
<b>Option 2</b>	Multimode fiber coupling
<b>Option 3</b>	Heat management
<b>Option 4</b>	High rate modulation
<b>Option 5</b>	Optical Isolator

<b>Option 6</b>	OEM version
-----------------	-------------