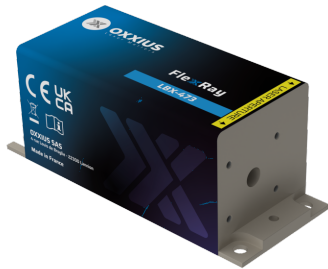


Gamme	CW & Modulated Lasers
Title	FlexxRay 473 nm
Reference	LBX-473
Description	<p>The FlexxRay LBX-473 is a compact 473 nm laser source delivering one of the highest power available on the market over a beam of superior quality, and featuring a high-speed modulation. Its integrated control electronics and robust design suit both laboratory and industrial use. Performance, stability, and versatility make it a trusted solution for fluorescence-based microscopy, optogenetics and illumination.</p> <p>Key features</p> <ul style="list-style-type: none"> • TEM₀₀ spatial mode • $\pm 0.5\%$ long-term power stability; low optical noise • Modulation up to 150 MHz • Integrated control electronics • 100×40 mm industry-standard footprint <p>Fully compatible with Oxxius MixxWave combiners for single-mode fiber delivery alongside other laser lines.</p>



Product Variations

Part Number	Puissance
LBX-473-100-CSB-PPA	100mW
LBX-473-300-CSB-PPA	300mW

Optical Characteristics

Emission wavelength	473 nm
Tolerance	(± 5 nm tolerance)

Control modes	Automated power control, Automated current control
Optical noise	$\leq 0.2\%$ rms, 10Hz-20MHz bandwidth
Spectral linewidth	$\leq 2\text{nm}$
Digital modulation function - Rise / fall time	$\leq 2\text{ns}$
Digital modulation function - Bandwidth	$\geq 150\text{MHz}$
Analog modulation function - Rise / fall time	$\leq 150\text{ns}$
Analog modulation function - Bandwidth	$\geq 3\text{MHz}$
Beam diameter, 1/e² level, 50mm from the beam aperture	$0.8 \pm 0.2\text{mm}$
Beam divergence, 1/e² level full beam, far field	$\leq 1.3\text{mrad}$
Beam quality factor M²	≤ 1.25
Beam circularity, far field	$\geq 90\%$
Polarization state	Linear, vertical, extinction ratio $\geq 20\text{dB}$

General Specifications

Power consumption	10W max.
Supply voltage	5V to 12V
Operating temperature	10°C to 50°C
Storage temperature and humidity	0°C to 60°C
Warm up time	≤ 2 minutes
Interfaces	USB, RS-232, direct modulation inputs
Dimensions (laser head)	100x40x40 mm
Weight (laser head)	$\leq 330\text{ g}$
Controller dimensions	106x126x56 mm
Compliance	CE (incl. IEC 60825-1) and FDA 21 CFR 1040.10 / 1040.11
Laser class	3B
Warranty	24 months or 10000 hours, whichever occurs first

Options

Option 1	Single-mode fiber coupling
Option 2	Multimode fiber coupling
Option 3	Heat management
Option 4	Electromechanical shutter
Option 5	Band-pass filter

Option 6	OEM version
-----------------	-------------